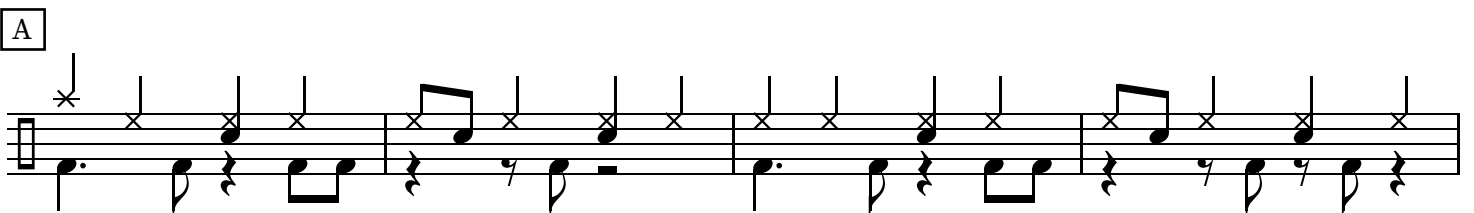
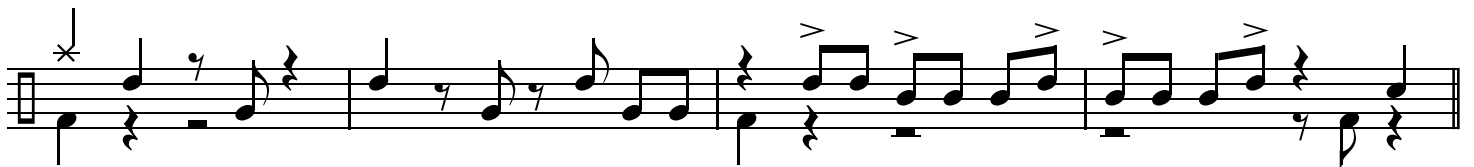
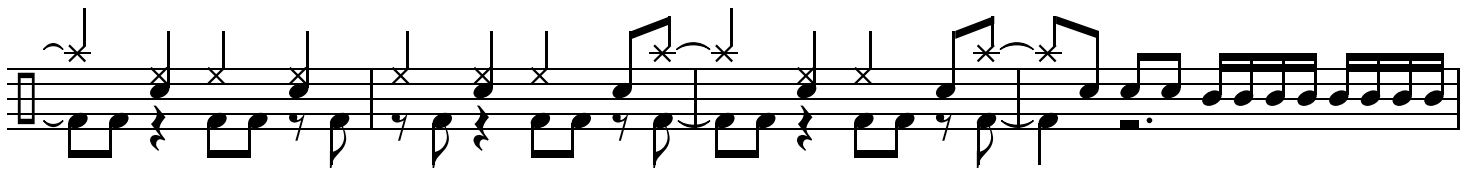
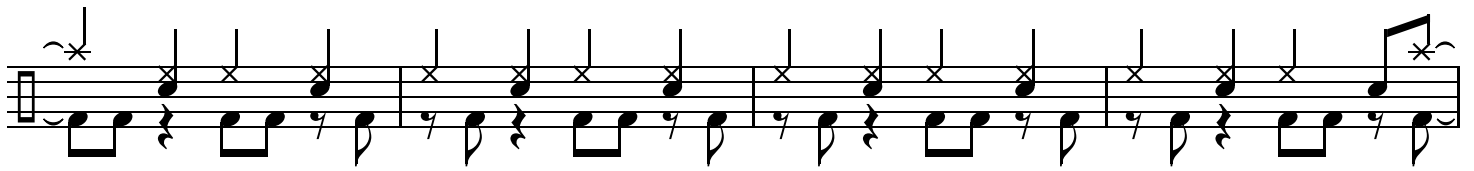
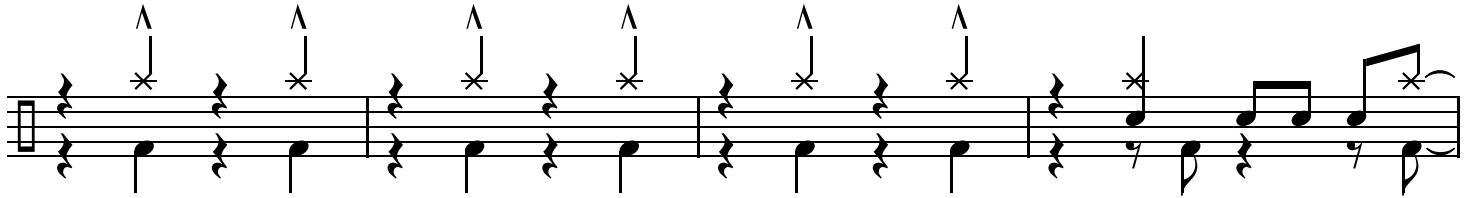
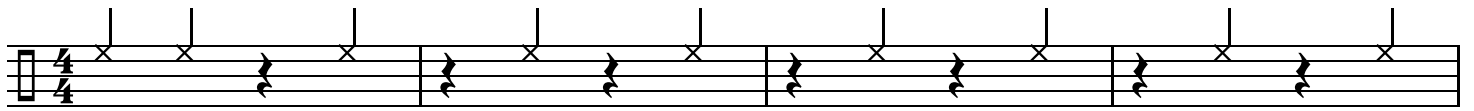


Time Lapse

Poppin' Party



B

Musical notation for section B, consisting of two staves. The first staff has a star above the first measure. The second staff has an accent (^) above the 10th measure and a circle (o) above the 12th measure.

C

Musical notation for section C, consisting of three staves. The first staff has a star above the first measure. The second and third staves have stars above various notes.

D

Musical notation for section D, consisting of four staves. The first three staves have stars above various notes. The fourth staff has stars above the first two measures and accents (>) above the 10th and 11th measures.

E

Musical notation for section E, consisting of one staff with a star above the first measure.

Time Lapse

F

Musical notation for the F chord section, consisting of two staves. The first staff features a sequence of chords with a melodic line on top and a bass line on the bottom. The second staff continues the sequence, ending with a triplet of eighth notes marked with a '3' above it.

G

Musical notation for the G chord section, consisting of two staves. The first staff shows a series of chords with a melodic line and a bass line. The second staff continues the sequence, ending with a series of eighth notes.

H

Musical notation for the H chord section, consisting of two staves. The first staff shows a series of chords with a melodic line and a bass line. The second staff features a more complex rhythmic pattern with eighth notes and rests.

I

Musical notation for the I chord section, consisting of two staves. The first staff shows a series of chords with a melodic line and a bass line. The second staff continues the sequence, ending with a series of eighth notes.

J

Musical notation for the J chord section, consisting of two staves. The first staff shows a series of chords with a melodic line and a bass line. The second staff features a triplet of eighth notes marked with a '3' above it, followed by a melodic line and a bass line.

Time Lapse

K

Musical notation for section K, consisting of four staves. The notation includes various rhythmic values, rests, and articulation marks such as asterisks and slurs. The fourth staff concludes with three triplet markings over groups of three notes.

L

Musical notation for section L, consisting of four staves. The notation includes various rhythmic values, rests, and articulation marks such as asterisks and slurs.

M

Musical notation for section M, consisting of two staves. The notation includes various rhythmic values, rests, and articulation marks such as asterisks and slurs.

Time Lapse

N

5

Musical notation for section N, first staff. It features a single melodic line on a five-line staff with a treble clef. The notation includes quarter notes, eighth notes, and rests, with some notes marked with an 'x' above them. The staff concludes with a double bar line and a fermata.

Text

O

Musical notation for section O, first staff. It features a single melodic line on a five-line staff with a treble clef. The notation includes quarter notes, eighth notes, and rests, with some notes marked with an 'x' above them. The staff concludes with a double bar line and a fermata.

Musical notation for section O, second staff. It features a single melodic line on a five-line staff with a treble clef. The notation includes quarter notes, eighth notes, and rests, with some notes marked with an 'x' above them. The staff concludes with a double bar line and a fermata.

Musical notation for section O, third staff. It features a single melodic line on a five-line staff with a treble clef. The notation includes quarter notes, eighth notes, and rests, with some notes marked with an 'x' above them. The staff concludes with a double bar line and a fermata.

Musical notation for section O, fourth staff. It features a single melodic line on a five-line staff with a treble clef. The notation includes quarter notes, eighth notes, and rests, with some notes marked with an 'x' above them. The staff concludes with a double bar line and a fermata.

P

Musical notation for section P, first staff. It features a single melodic line on a five-line staff with a treble clef. The notation includes quarter notes, eighth notes, and rests, with some notes marked with an 'x' above them. The staff concludes with a double bar line and a fermata.

Q

Musical notation for section Q, first staff. It features a single melodic line on a five-line staff with a treble clef. The notation includes quarter notes, eighth notes, and rests, with some notes marked with an 'x' above them. The staff concludes with a double bar line and a fermata.

Musical notation for section Q, second staff. It features a single melodic line on a five-line staff with a treble clef. The notation includes quarter notes, eighth notes, and rests, with some notes marked with an 'x' above them. The staff concludes with a double bar line and a fermata.

Musical notation for section Q, third staff. It features a single melodic line on a five-line staff with a treble clef. The notation includes quarter notes, eighth notes, and rests, with some notes marked with an 'x' above them. The staff concludes with a double bar line and a fermata.